

ECR #: 29

Title: Update to ECR 15

Release Date:

Impact: Change

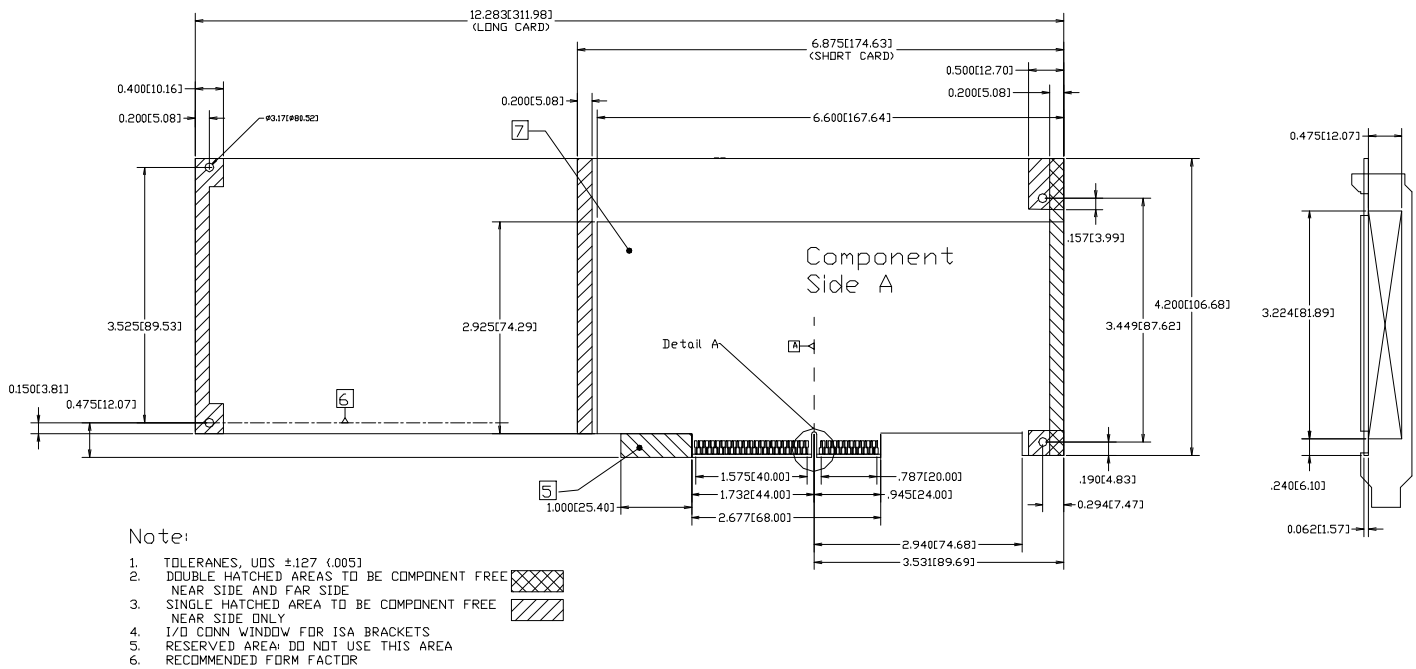
Spec Version: A.G.P. 1.0

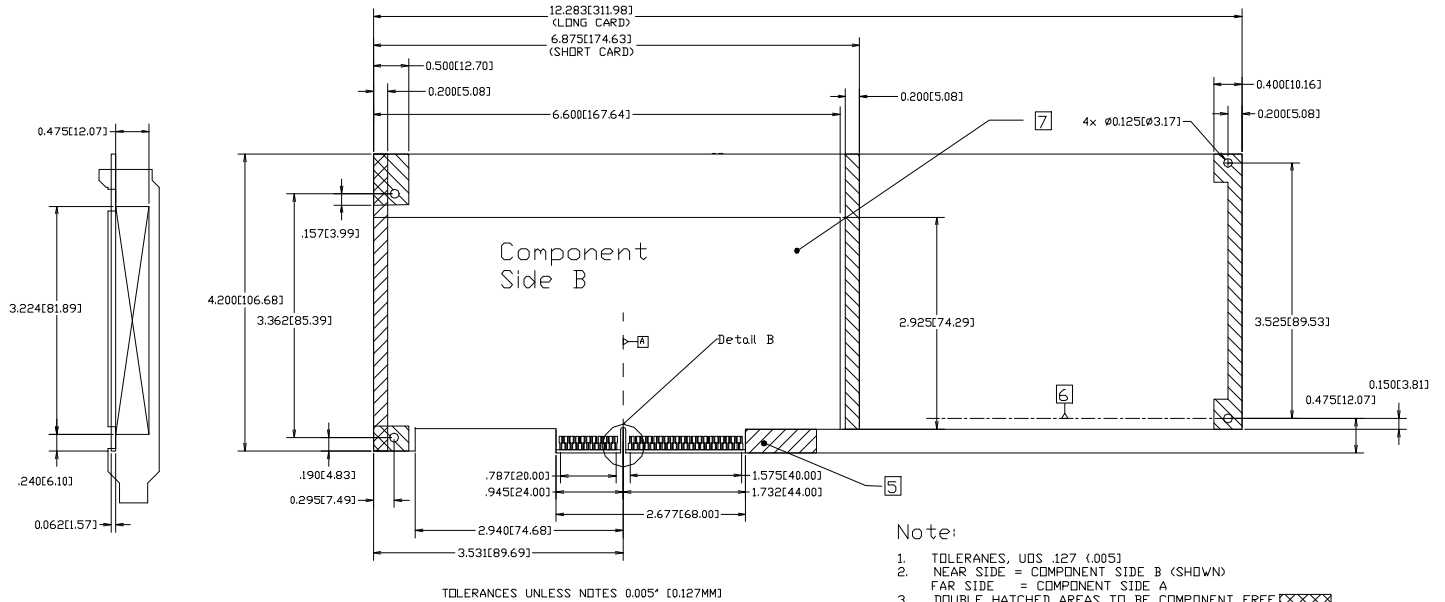
Summary: Remove the English dimension of the critical pin to pin spacing from Detail A and B. Add note (*) after note 7 of drawing figure 5-1, that indicates that the contact system is a 1 mm and that when using the English equivalent the conversion is required to be to 5 digits. For work in process, it is highly recommended that these dimensions be checked.

Background: In the AGP 1.0 specification and in ECR #14 there has been confusion as to the “real” critical spacing between adjacent pins. In previous drawings the dimension in question was called out as 1 mm or 0.039 inches. However, the system is really a metric system and using 0.039 instead of the 1 mm or 5 digit English equivalent introduces rounding errors across the 62 pins such that the pins and connector pads do not line up.

Change Current Specification as shown:

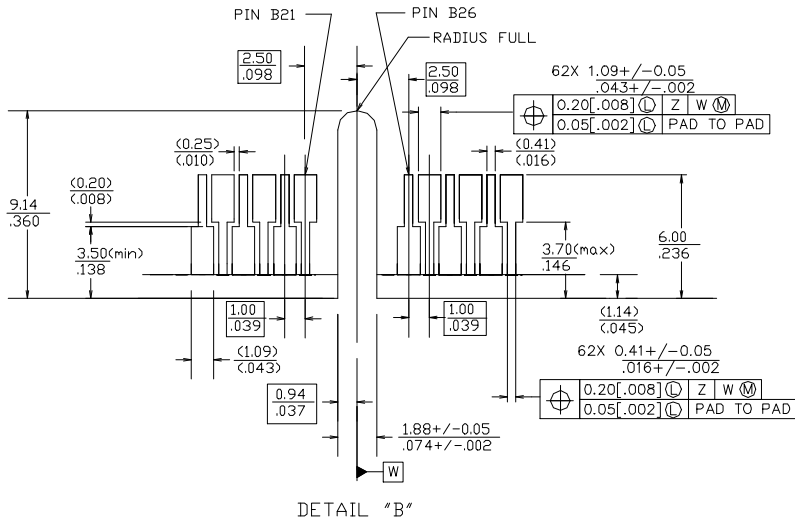
Replace previous version on these drawings with the following:





Note:

1. TOLERANCES, UNLESS NOTED 0.005"
2. NEAR SIDE = COMPONENT SIDE B (SHOWN)
FAR SIDE = COMPONENT SIDE A
3. DOUBLE HATCHED AREAS TO BE COMPONENT FREE
NEAR SIDE AND FAR SIDE
4. SINGLE HATCHED AREA TO BE COMPONENT FREE
FAR SIDE ONLY
5. 1/0 CONN WINDOW FOR ISA BRACKETS
RESERVED AREA DO NOT USE THIS AREA
6. RECOMMENDED FORM FACTOR



Scale = 4X

Figure 5-1:A.G.P. B- B-Side Card Edge and Finger Layout

